

Courtesy Of Jacquie C Smith Of 2% Realty Pro

\$364,900 - 351 Nelson Drive, Spruce Grove

MLS® #E4462056

\$364,900

4 Bedroom, 3.50 Bathroom, 1,349 sqft
Single Family on 0.00 Acres

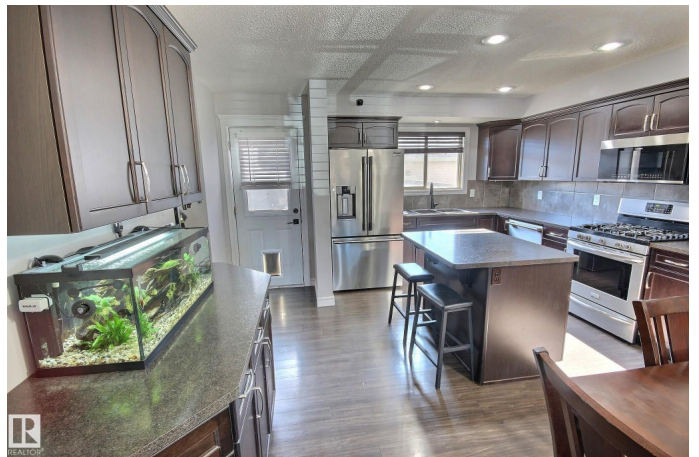
McLaughlin_SPGR, Spruce Grove, AB

NO CONDO FEES HERE! This Pacesetter built home offers EVERYTHING that you have been looking for at a price that you can afford! A modern open concept design with loads of space, island kitchen with sleek dark cabinets, newer stainless appliances, GAS stove, open to dining area and big living room with windows to the front of the home, off the kitchen is a convenient 1/2 bath and door access to the fenced yard with deck, low maintenance yard and access to the insulated double detached garage, upper level offers 3 very good sized bedrooms, primary with double closets and a full 4 piec ensuite, the other room share a full bathroom with JETTED tub! Lower level was completed with den (used as a bedroom), cozy family room, modern 3 piece bath and mechanical/laundry area. Amazing location close to all major amenities, schools, green space and minutes to major connecting routes, a short drive to Edmonton. Add this one to your must see list.

Built in 2012

Essential Information

MLS® #	E4462056
Price	\$364,900
Bedrooms	4
Bathrooms	3.50



Full Baths	3
Half Baths	1
Square Footage	1,349
Acres	0.00
Year Built	2012
Type	Single Family
Sub-Type	Residential Attached
Style	2 Storey
Status	Active

Community Information

Address	351 Nelson Drive
Area	Spruce Grove
Subdivision	McLaughlin_SPGR
City	Spruce Grove
County	ALBERTA
Province	AB
Postal Code	T7X 0N9

Amenities

Amenities	Off Street Parking, On Street Parking, Air Conditioner, Deck, Vinyl Windows
Parking	Double Garage Detached

Interior

Interior Features	ensuite bathroom
Appliances	Air Conditioning-Central, Dishwasher-Built-In, Dryer, Oven-Microwave, Refrigerator, Stove-Gas, Washer, Window Coverings
Heating	Forced Air-1, Natural Gas
Stories	3
Has Basement	Yes
Basement	Full, Finished

Exterior

Exterior	Wood, Vinyl
Exterior Features	Back Lane, Fenced, Playground Nearby, Schools, Shopping Nearby
Roof	Asphalt Shingles
Construction	Wood, Vinyl
Foundation	Concrete Perimeter

Additional Information

Date Listed October 14th, 2025

Days on Market 4

Zoning Zone 91

DATA IS DEEMED RELIABLE BUT IS NOT GUARANTEED ACCURATE BY THE REALTORS® ASSOCIATION OF EDMONTON. COPYRIGHT 2025 BY THE REALTORS® ASSOCIATION OF EDMONTON. ALL RIGHTS RESERVED. Trademarks are owned or controlled by the Canadian Real Estate Association (CREA) and identify real estate professionals who are members of CREA (REALTOR®, REALTORS®) and/or the quality of services they provide (MLS®, Multiple Listing Service®)

Listing information last updated on October 18th, 2025 at 5:17pm MDT