

Courtesy Of Mark Barnes Of RE/MAX Elite

\$539,900 - 6418 106 Street, Edmonton

MLS® #E4459423

\$539,900

5 Bedroom, 3.5 Bathroom, 1,284 sqft
Condo / Townhouse on 0.00 Acres

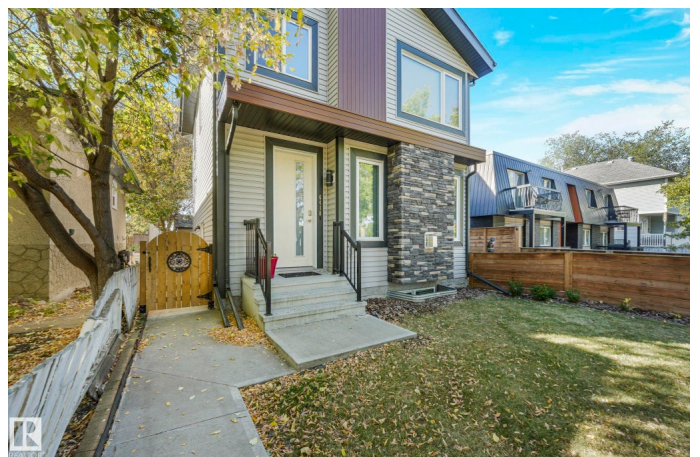
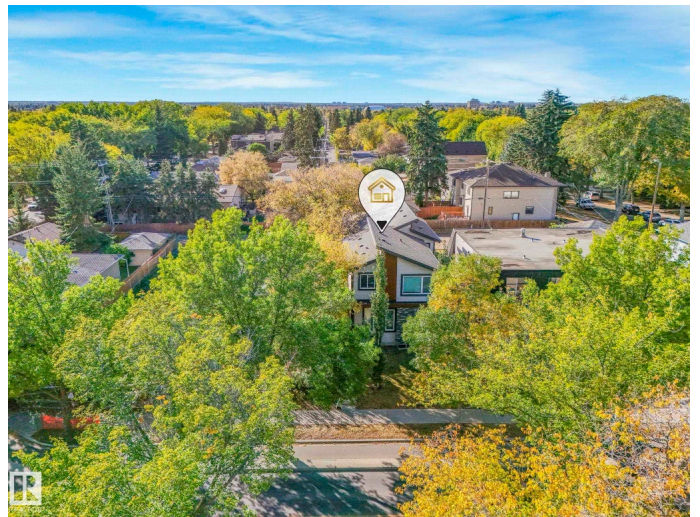
Allendale, Edmonton, AB

Welcome to the vibrant community of Allendale! This functional 2018 custom-built Front/Back Duplex offers 1,850 SqFt of fully finished living space w/ no expenses spared in upgrades & modern finishings. Featuring 5 Bedrooms, 3.5 Bathrooms & A/C, this home is perfect for families or investors alike. The 9th™ main floor boasts a stunning kitchen w/ quartz countertops, full-height cabinets, S/S appliances & large pantry. The spacious dining area separates the kitchen from the living room completed w/ stone-facing gas fireplace. Upstairs you^{ll}™ find 3 bedrooms, including a generous primary suite w/ dual-sink ensuite & shower. A full bath & conveniently placed laundry complete this level. The basement features 9th™ ceilings, a SEPARATE ENTRANCE, 2 bedrooms, full bath & family room—ideal SUITE POTENTIAL! Enjoy a fully fenced private yard & detached garage. Close to the U of A, schools, parks & LRT, this home offers great value & endless options. Don^t™ miss out on this opportunity.

Built in 2018

Essential Information

MLS® #	E4459423
Price	\$539,900
Bedrooms	5



Bathrooms	3.50
Full Baths	3
Half Baths	1
Square Footage	1,284
Acres	0.00
Year Built	2018
Type	Condo / Townhouse
Sub-Type	Half Duplex
Style	2 Storey
Status	Active

Community Information

Address	6418 106 Street
Area	Edmonton
Subdivision	Allendale
City	Edmonton
County	ALBERTA
Province	AB
Postal Code	T6H 2V4

Amenities

Amenities	Air Conditioner, Ceiling 9 ft.
Parking	Single Garage Detached

Interior

Interior Features	ensuite bathroom
Appliances	Air Conditioning-Central, Dishwasher-Built-In, Dryer, Garage Control, Garage Opener, Microwave Hood Fan, Refrigerator, Stove-Electric, Washer, Window Coverings
Heating	Forced Air-1, Natural Gas
Fireplace	Yes
Fireplaces	Stone Facing
Stories	2
Has Basement	Yes
Basement	Full, Finished

Exterior

Exterior	Wood, Stone, Vinyl
Exterior Features	Back Lane, Fenced, Landscaped, Park/Reserve, Playground Nearby,

Public Transportation, Schools, Shopping Nearby

Roof Asphalt Shingles
Construction Wood, Stone, Vinyl
Foundation Concrete Perimeter

School Information

Elementary Parkallen
Middle Allendale
High Strathcona

Additional Information

Date Listed September 25th, 2025
Days on Market 20
Zoning Zone 15

DATA IS DEEMED RELIABLE BUT IS NOT GUARANTEED ACCURATE BY THE REALTORS® ASSOCIATION OF EDMONTON. COPYRIGHT 2025 BY THE REALTORS® ASSOCIATION OF EDMONTON. ALL RIGHTS RESERVED. Trademarks are owned or controlled by the Canadian Real Estate Association (CREA) and identify real estate professionals who are members of CREA (REALTOR®, REALTORS®) and/or the quality of services they provide (MLS®, Multiple Listing Service®)

Listing information last updated on October 15th, 2025 at 2:18pm MDT