

# \$749,000 - 209 Crystal Creek Drive, Leduc

MLS® #E4455388

**\$749,000**

5 Bedroom, 4.00 Bathroom, 2,451 sqft  
Single Family on 0.00 Acres

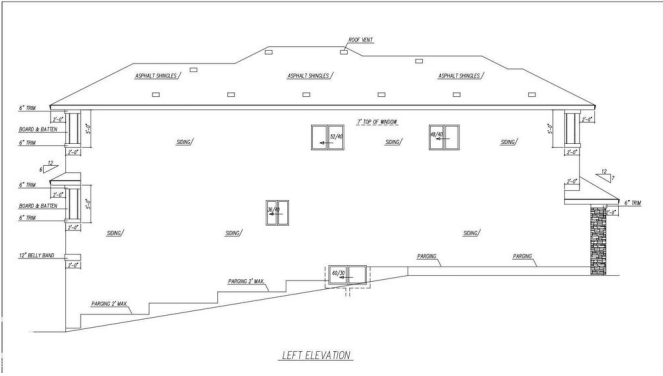
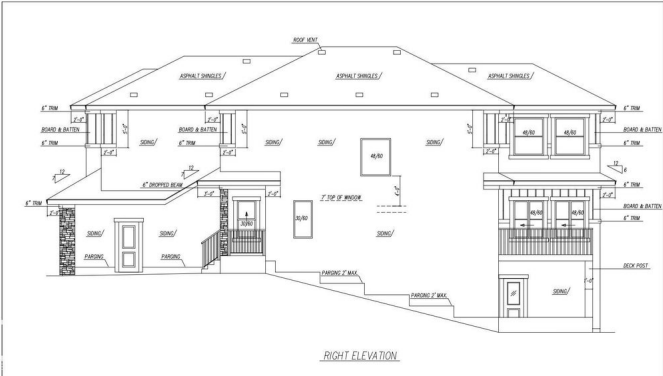
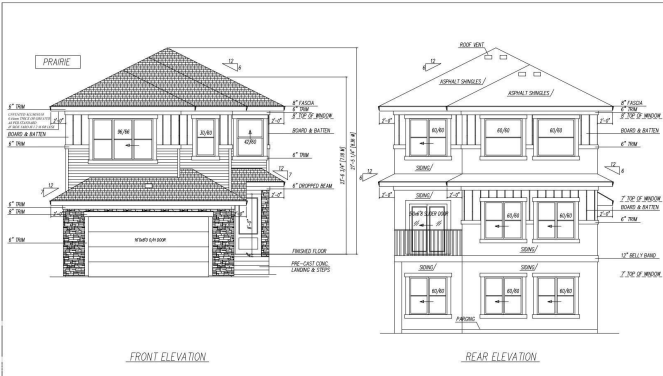
Crystal Creek\_LEDU, Leduc, AB

Stunning 2-storey Walkout home offering modern living space with serene pond views. Features a grand open-to-above living area with massive windows for natural light, elegant kitchen with large island, plus a massive spice kitchen. Main floor includes a full bedroom & bathroom—perfect for guests or extended family. Upstairs boasts 2 master bedrooms with luxurious ensuites, 2 additional bedrooms, a bonus room, and full bath. Additional features include separate side entrance (future legal suite potential), deck, man door to garage, and beautiful ceiling details. Prime location—walking distance to Ohpaho Secondary School, close to grocery stores and major amenities. A perfect blend of luxury, functionality, and location.

Built in 2025

## Essential Information

MLS® #	E4455388
Price	\$749,000
Bedrooms	5
Bathrooms	4.00
Full Baths	4
Square Footage	2,451
Acres	0.00
Year Built	2025



Type	Single Family
Sub-Type	Detached Single Family
Style	2 Storey
Status	Active

### Community Information

Address	209 Crystal Creek Drive
Area	Leduc
Subdivision	Crystal Creek_LEDU
City	Leduc
County	ALBERTA
Province	AB
Postal Code	T9E 0X6

### Amenities

Amenities	See Remarks
Parking	Double Garage Attached
Is Waterfront	Yes

### Interior

Interior Features	ensuite bathroom
Appliances	See Remarks
Heating	Forced Air-1, Natural Gas
Stories	2
Has Basement	Yes
Basement	Full, Unfinished

### Exterior

Exterior	Wood, Vinyl
Exterior Features	Airport Nearby, Backs Onto Lake, Park/Reserve, Playground Nearby, Public Transportation, Schools, Shopping Nearby
Roof	Asphalt Shingles
Construction	Wood, Vinyl
Foundation	Concrete Perimeter

### Additional Information

Date Listed	August 29th, 2025
Days on Market	1
Zoning	Zone 81

DATA IS DEEMED RELIABLE BUT IS NOT GUARANTEED ACCURATE BY THE REALTORS® ASSOCIATION OF EDMONTON. COPYRIGHT 2025 BY THE REALTORS® ASSOCIATION OF EDMONTON. ALL RIGHTS RESERVED.Trademarks are owned or controlled by the Canadian Real Estate Association (CREA) and identify real estate professionals who are members of CREA (REALTOR®, REALTORS®) and/or the quality of services they provide (MLS®, Multiple Listing Service®)

Listing information last updated on August 30th, 2025 at 3:02pm MDT