

## \$410,000 - 210 Schubert Street, Leduc

MLS® #E4454221

**\$410,000**

3 Bedroom, 2.50 Bathroom, 1,602 sqft

Single Family on 0.00 Acres

Suntree (Leduc), Leduc, AB

Welcome to this bright and inviting home in Suntree, ideally located on a quiet street across from a playground. This thoughtfully designed property is in a family-friendly neighbourhood close to schools, walking paths, shopping, and more. Step onto the charming front porch before entering a spacious foyer with ample storage, leading into a warm & welcoming main floor. The kitchen offers granite countertops, a center island, plenty of cupboards, & a pantry, and opens to the dining area & living room with a cozy gas fireplace. A 2-pc bath & convenient main floor laundry complete this level. Upstairs you'll find three comfortable bedrooms, including a spacious primary suite w/ a large walk-in closet & an ensuite featuring a glass and tile shower. This level also has a 4-pc main bath. The basement is partly finished and ready for your personal touch. Outside, enjoy the back deck and a large yard with a shed and space for RV parking. Central A/C adds to the comfort of this home. Just move in and enjoy!

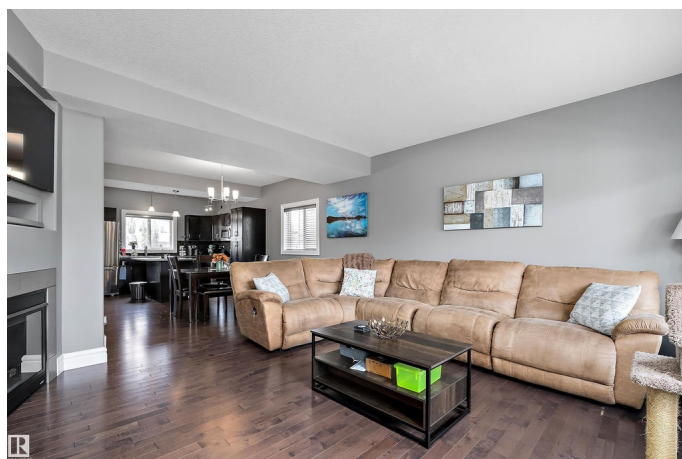
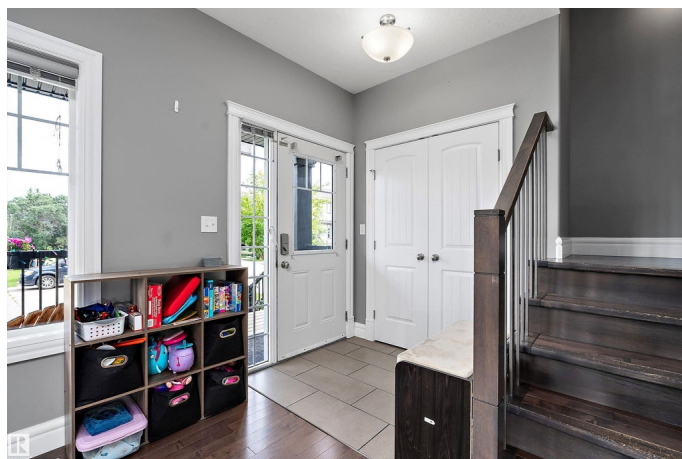
Built in 2013

### Essential Information

MLS® # E4454221

Price \$410,000

Bedrooms 3



|                |                        |
|----------------|------------------------|
| Bathrooms      | 2.50                   |
| Full Baths     | 2                      |
| Half Baths     | 1                      |
| Square Footage | 1,602                  |
| Acres          | 0.00                   |
| Year Built     | 2013                   |
| Type           | Single Family          |
| Sub-Type       | Detached Single Family |
| Style          | 2 Storey               |
| Status         | Active                 |

### **Community Information**

|             |                     |
|-------------|---------------------|
| Address     | 210 Schubert Street |
| Area        | Leduc               |
| Subdivision | Suntree (Leduc)     |
| City        | Leduc               |
| County      | ALBERTA             |
| Province    | AB                  |
| Postal Code | T9E 8R8             |

### **Amenities**

|           |                                      |
|-----------|--------------------------------------|
| Amenities | Air Conditioner                      |
| Parking   | Parking Pad Cement/Paved, RV Parking |

### **Interior**

|                   |  |
|-------------------|--|
| Interior Features | ensuite bathroom   |
| Appliances        | Dishwasher-Built-In, Dryer, Oven-Microwave, Refrigerator, Storage Shed, Stove-Electric, Washer, Window Coverings |
| Heating           | Forced Air-1, Natural Gas  |
| Fireplace         | Yes  |
| Fireplaces        | Tile Surround  |
| Stories           | 2  |
| Has Basement      | Yes  |
| Basement          | Full, Partially Finished   |

### **Exterior**

|                   |  |
|-------------------|--|
| Exterior          | Wood, Vinyl  |
| Exterior Features | Airport Nearby, Back Lane, Golf Nearby, Playground Nearby, Schools, Shopping Nearby, See Remarks |

|              |                    |
|--------------|--------------------|
| Roof         | Asphalt Shingles   |
| Construction | Wood, Vinyl        |
| Foundation   | Concrete Perimeter |

**Additional Information**

|                |                   |
|----------------|-------------------|
| Date Listed    | August 22nd, 2025 |
| Days on Market | 12                |
| Zoning         | Zone 81           |

DATA IS DEEMED RELIABLE BUT IS NOT GUARANTEED ACCURATE BY THE REALTORS® ASSOCIATION OF EDMONTON. COPYRIGHT 2025 BY THE REALTORS® ASSOCIATION OF EDMONTON. ALL RIGHTS RESERVED.Trademarks are owned or controlled by the Canadian Real Estate Association (CREA) and identify real estate professionals who are members of CREA (REALTOR®, REALTORS®) and/or the quality of services they provide (MLS®, Multiple Listing Service®)

Listing information last updated on September 3rd, 2025 at 7:17am MDT