

\$396,900 - 129 804 Welsh Drive, Edmonton

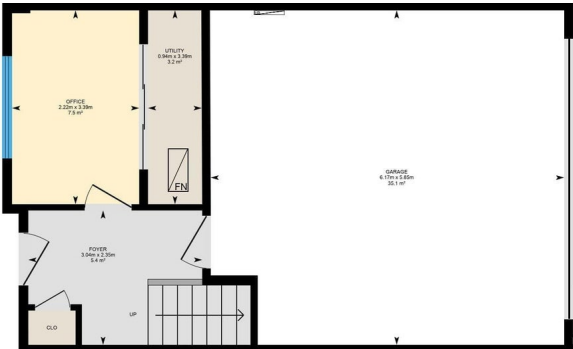
MLS® #E4450573

\$396,900

3 Bedroom, 2.50 Bathroom, 1,610 sqft
Condo / Townhouse on 0.00 Acres

Walker, Edmonton, AB

Overlooking a tranquil pond, this fantastic unit in The Village at Walker Lake offers one of the best locations in the complex. A fenced front yard and welcoming foyer lead to a spacious flex room, utility area, and access to the double attached garage. Up one level, the kitchen is designed for efficiency with a walk-in pantry, quartz countertops, large island, and stainless steel appliances. The dining area flows into the bright great room with electric fireplace and access to a balcony with scenic views. A two-piece bath completes this level. Upstairs, the primary suite features a walk-in closet and full ensuite. Two additional bedrooms, a second full bath, and convenient laundry complete the top floor. Located close to schools, shopping, and amenities.



Built in 2021

Essential Information

MLS® #	E4450573
Price	\$396,900
Bedrooms	3
Bathrooms	2.50
Full Baths	2
Half Baths	1
Square Footage	1,610
Acres	0.00

Year Built	2021
Type	Condo / Townhouse
Sub-Type	Townhouse
Style	2 Storey
Status	Active

Community Information

Address	129 804 Welsh Drive
Area	Edmonton
Subdivision	Walker
City	Edmonton
County	ALBERTA
Province	AB
Postal Code	T6X 1Y8

Amenities

Amenities	Hot Water Tankless, Parking-Visitor, HRV System
Parking	Double Garage Attached
Is Waterfront	Yes

Interior

Interior Features	ensuite bathroom
Appliances	Dishwasher-Built-In, Dryer, Refrigerator, Stove-Electric, Washer
Heating	Forced Air-1, Natural Gas
Fireplace	Yes
Fireplaces	Glass Door
Stories	3
Has Basement	Yes
Basement	Full, Finished

Exterior

Exterior	Wood, Vinyl
Exterior Features	Schools, Shopping Nearby, Waterfront Property
Roof	Asphalt Shingles
Construction	Wood, Vinyl
Foundation	Concrete Perimeter

Additional Information

Date Listed	July 31st, 2025
-------------	-----------------

Days on Market	2
Zoning	Zone 53
Condo Fee	\$187

DATA IS DEEMED RELIABLE BUT IS NOT GUARANTEED ACCURATE BY THE REALTORS® ASSOCIATION OF EDMONTON. COPYRIGHT 2025 BY THE REALTORS® ASSOCIATION OF EDMONTON. ALL RIGHTS RESERVED. Trademarks are owned or controlled by the Canadian Real Estate Association (CREA) and identify real estate professionals who are members of CREA (REALTOR®, REALTORS®) and/or the quality of services they provide (MLS®, Multiple Listing Service®)

Listing information last updated on August 2nd, 2025 at 8:47am MDT