

Courtesy Of Lindsay Mercer Of The Good Real Estate Company

\$185,000 - 322 4309 33 Street, Stony Plain

MLS® #E4447832

\$185,000

2 Bedroom, 2.00 Bathroom, 1,088 sqft
Condo / Townhouse on 0.00 Acres

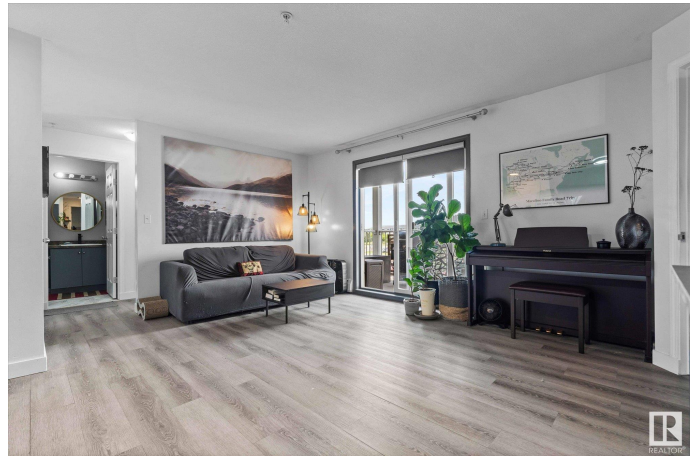
South Business Park, Stony Plain, AB

Welcome home to this open and bright RARE 2 bedroom PLUS den and two FULL bathroom condo in Stony Plain! The owners have added additional cabinetry in the spacious kitchen for even more storage. The primary bedroom has a walk through closet leading to the 3-pc ensuite. Second bedroom on the opposite side of the living space has access to a 4-pc bathroom, ideal for roommates or families. The ensuite laundry has multiple shelves for additional storage and the spacious deck faces west for tons of evening light. The additional LARGE den area can be used for a home office, storage or gaming room! Ideally located with fast access to highway 16A and walking distance to grocery stores, the hospital, Mavericks Donuts (!!) and many other amenities!

Built in 2008

Essential Information

MLS® #	E4447832
Price	\$185,000
Bedrooms	2
Bathrooms	2.00
Full Baths	2
Square Footage	1,088
Acres	0.00
Year Built	2008



Type	Condo / Townhouse
Sub-Type	Lowrise Apartment
Style	Single Level Apartment
Status	Active

Community Information

Address	322 4309 33 Street
Area	Stony Plain
Subdivision	South Business Park
City	Stony Plain
County	ALBERTA
Province	AB
Postal Code	T7Z 0C4

Amenities

Amenities	Intercom, Secured Parking, Security Door, Sprinkler System-Fire
Parking	Heated, Stall, Underground

Interior

Interior Features	ensuite bathroom
Appliances	Dishwasher-Built-In, Microwave Hood Fan, Refrigerator, Stacked Washer/Dryer, Stove-Electric
Heating	Baseboard, Hot Water, Electric
# of Stories	4
Stories	4
Has Basement	Yes
Basement	None, No Basement

Exterior

Exterior	Wood, Vinyl
Exterior Features	Golf Nearby, Landscaped, Playground Nearby, Schools, Shopping Nearby
Roof	Asphalt Shingles
Construction	Wood, Vinyl
Foundation	Concrete Perimeter

School Information

Elementary	Forest Green School
Middle	High Park School

High Memorial Composite High

Additional Information

Date Listed July 15th, 2025

Days on Market 1

Zoning Zone 91

Condo Fee \$554

DATA IS DEEMED RELIABLE BUT IS NOT GUARANTEED ACCURATE BY THE REALTORS® ASSOCIATION OF EDMONTON. COPYRIGHT 2025 BY THE REALTORS® ASSOCIATION OF EDMONTON. ALL RIGHTS RESERVED. Trademarks are owned or controlled by the Canadian Real Estate Association (CREA) and identify real estate professionals who are members of CREA (REALTOR®, REALTORS®) and/or the quality of services they provide (MLS®, Multiple Listing Service®)

Listing information last updated on July 16th, 2025 at 9:32am MDT