

## \$469,000 - 126 Greystone Crescent, Spruce Grove

MLS® #E4444250

**\$469,000**

4 Bedroom, 3.50 Bathroom, 1,563 sqft

Single Family on 0.00 Acres

Grove Meadows, Spruce Grove, AB

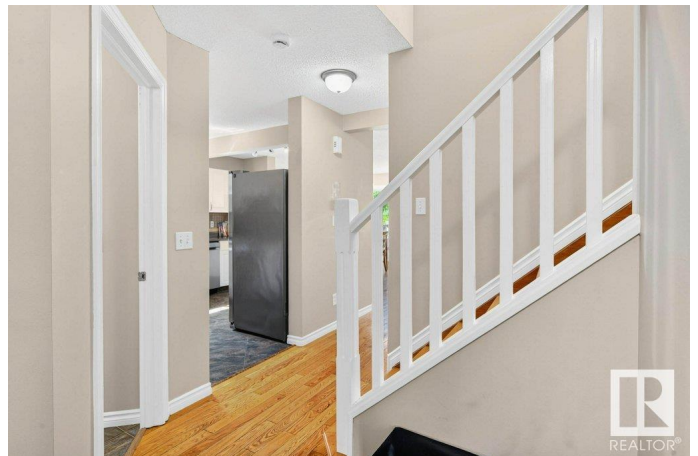
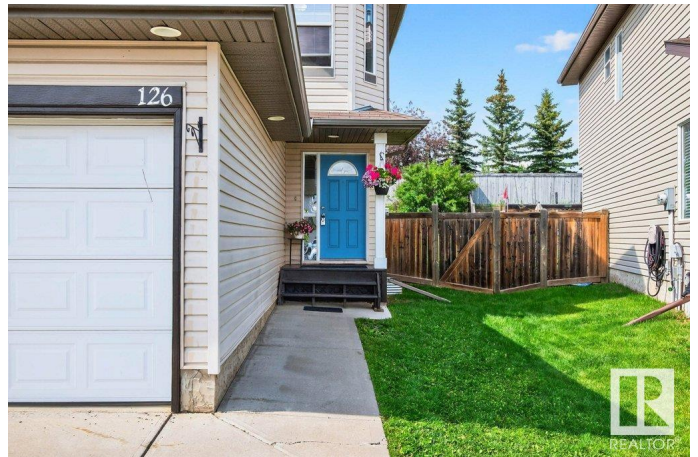
Welcome to this beautiful 4 bedroom family home with 4 - baths in Spruce Grove! Featuring a brand new fully finished basement with a bedroom, bathroom and a large family room, this home offers plenty of space for every family member. The open-concept main floor, with an open concept kitchen & living space, has a functional layout, and is perfect for gatherings. The kitchen has lots of cabinets, a breakfast counter, and great counter space. Upstairs, youâ€™™ll find 2 good-sized bedrooms and a comfortable KING SIZED Primary suite with a private ensuite and a large walk-in closet. The double attached garage provides convenience year-round, and the fully landscaped yard is ready for kids, pets, or summer BBQs. Located close to excellent schools, parks, and walking paths, this home is ideal for a growing family. Plus, with quick access to both Highway 16 and 16A, commuting to Edmonton or surrounding areas is fast and easy. This move-in-ready home offers the perfect blend of space, style, and location!

Built in 2006

### Essential Information

MLS® # E4444250

Price \$469,000



|                |                        |
|----------------|------------------------|
| Bedrooms       | 4                      |
| Bathrooms      | 3.50                   |
| Full Baths     | 3                      |
| Half Baths     | 1                      |
| Square Footage | 1,563                  |
| Acres          | 0.00                   |
| Year Built     | 2006                   |
| Type           | Single Family          |
| Sub-Type       | Detached Single Family |
| Style          | 2 Storey               |
| Status         | Active                 |

### Community Information

|             |                        |
|-------------|------------------------|
| Address     | 126 Greystone Crescent |
| Area        | Spruce Grove           |
| Subdivision | Grove Meadows          |
| City        | Spruce Grove           |
| County      | ALBERTA                |
| Province    | AB                     |
| Postal Code | T7X 0A7                |

### Amenities

|                |  |
|----------------|--|
| Amenities      | Deck, Detectors Smoke, Hot Water Natural Gas, No Animal Home, No Smoking Home, Vinyl Windows |
| Parking Spaces | 4  |
| Parking        | Double Garage Attached   |

### Interior

|                   |   |
|-------------------|---|
| Interior Features | ensuite bathroom  |
| Appliances        | Dishwasher-Built-In, Dryer, Garage Control, Garage Opener, Hood Fan, Oven-Microwave, Refrigerator, Stove-Electric, Washer, Window Coverings |
| Heating           | Forced Air-1, Natural Gas   |
| Stories           | 3   |
| Has Basement      | Yes   |
| Basement          | Full, Finished  |

### Exterior

|          |             |
|----------|-------------|
| Exterior | Wood, Vinyl |
|----------|-------------|

|                   |   |
|-------------------|---|
| Exterior Features | Fenced, Low Maintenance Landscape, Playground Nearby, Schools |
| Roof              | Asphalt Shingles  |
| Construction      | Wood, Vinyl   |
| Foundation        | Concrete Perimeter  |

**School Information**

|            |            |
|------------|------------|
| Elementary | Greystone  |
| Middle     | St. Thomas |
| High       | Composite  |

**Additional Information**

|                |                 |
|----------------|-----------------|
| Date Listed    | June 25th, 2025 |
| Days on Market | 25              |
| Zoning         | Zone 91         |

DATA IS DEEMED RELIABLE BUT IS NOT GUARANTEED ACCURATE BY THE REALTORS® ASSOCIATION OF EDMONTON. COPYRIGHT 2025 BY THE REALTORS® ASSOCIATION OF EDMONTON. ALL RIGHTS RESERVED.Trademarks are owned or controlled by the Canadian Real Estate Association (CREA) and identify real estate professionals who are members of CREA (REALTOR®, REALTORS®) and/or the quality of services they provide (MLS®, Multiple Listing Service®)

Listing information last updated on July 19th, 2025 at 10:47pm MDT