

## **\$675,000 - 11716 39 Avenue, Edmonton**

MLS® #E4440799

**\$675,000**

5 Bedroom, 2.50 Bathroom, 1,443 sqft

Single Family on 0.00 Acres

Greenfield, Edmonton, AB

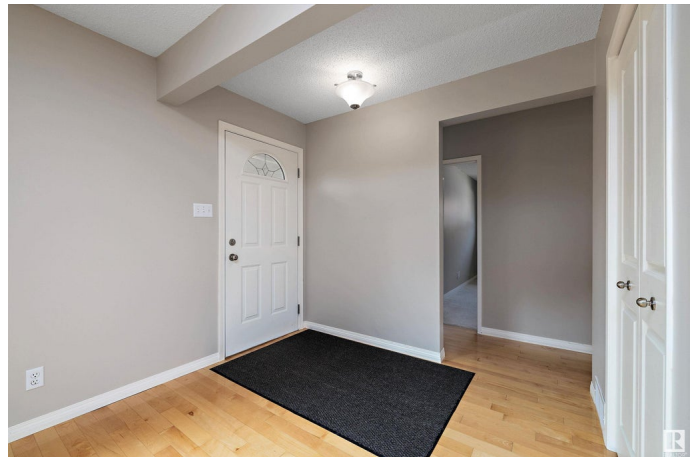
CURB APPEAL IN GREENFIELD. Offered for sale is this STUNNING 1400+ SQFT BUNGALOW located on a beautiful tree lined street and features HARDWOOD FLOORS THROUGHOUT, CENTRAL A/C, NEWER ROOF, HOT WATER ON DEMAND, NEW FURNACE and more. Kitchen has SOLID WOOD CABINETRY, FUNKY MOSAIC BACKSPLASH, SS APPLIANCES incl GAS RANGE, and eating bar. There are two living rooms, the front allowing great south sun to soak in through the bi picture window and rear with GORGEOUS FIREPLACE and direct access to the back yard. Basement is FULLY DEVELOPED with wide open rec room and 2 additional well sized bedrooms. Loads of storage in the crawl space which you can never have too much of. Landscaping is striking & front features a front stone sitting area with privacy/lattis walls offering additional outdoor living space. DOUBLE DETACHED GARAGE for our cold YEG winters. Close to great schools and almost all amenities, as well as Whitemud for easy commuting. Close to U of A and the The Derrick Club. this home has it all.

Built in 1966

### **Essential Information**

MLS® #

E4440799



Price	\$675,000
Bedrooms	5
Bathrooms	2.50
Full Baths	2
Half Baths	1
Square Footage	1,443
Acres	0.00
Year Built	1966
Type	Single Family
Sub-Type	Detached Single Family
Style	Bungalow
Status	Active

### Community Information

Address	11716 39 Avenue
Area	Edmonton
Subdivision	Greenfield
City	Edmonton
County	ALBERTA
Province	AB
Postal Code	T6J 0M9

### Amenities

Amenities	Off Street Parking, Air Conditioner, Crawl Space, Deck, Front Porch, Hot Water Instant, No Animal Home, No Smoking Home
Parking Spaces	4
Parking	Double Garage Detached

### Interior

Interior Features	ensuite bathroom
Appliances	Air Conditioning-Central, Dishwasher-Built-In, Dryer, Garage Control, Garage Opener, Hood Fan, Oven-Microwave, Refrigerator, Stove-Gas, Washer
Heating	Forced Air-1, Natural Gas
Stories	2
Has Basement	Yes
Basement	Full, Finished

### Exterior

Exterior	Wood, Stucco, Vinyl
Exterior Features	Back Lane, Fenced, Flat Site, Golf Nearby, Landscaped, Playground Nearby, Public Transportation, Schools, Shopping Nearby
Roof	Asphalt Shingles
Construction	Wood, Stucco, Vinyl
Foundation	Concrete Perimeter

### **School Information**

Elementary	Greenfield
Middle	Vernon Barford
High	Harry Ainlay

### **Additional Information**

Date Listed	June 6th, 2025
Days on Market	1
Zoning	Zone 16

DATA IS DEEMED RELIABLE BUT IS NOT GUARANTEED ACCURATE BY THE REALTORS® ASSOCIATION OF EDMONTON. COPYRIGHT 2025 BY THE REALTORS® ASSOCIATION OF EDMONTON. ALL RIGHTS RESERVED. Trademarks are owned or controlled by the Canadian Real Estate Association (CREA) and identify real estate professionals who are members of CREA (REALTOR®, REALTORS®) and/or the quality of services they provide (MLS®, Multiple Listing Service®)

Listing information last updated on June 7th, 2025 at 2:02pm MDT