

# **\$129,900 - 511 13910 Stony Plain Road, Edmonton**

MLS® #E4440508

**\$129,900**

2 Bedroom, 1.00 Bathroom, 856 sqft

Condo / Townhouse on 0.00 Acres

Glenora, Edmonton, AB

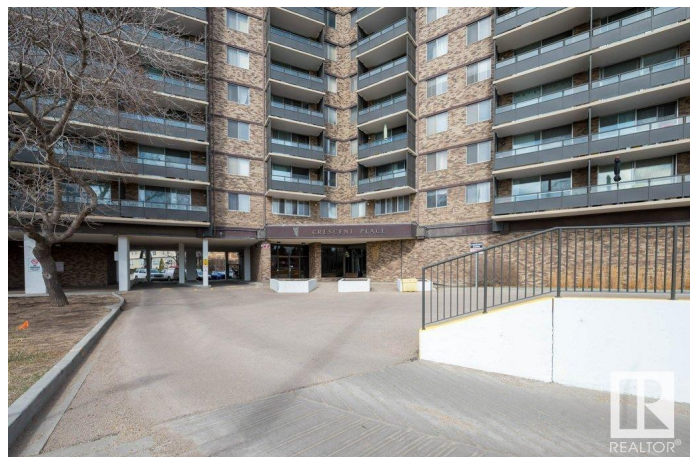
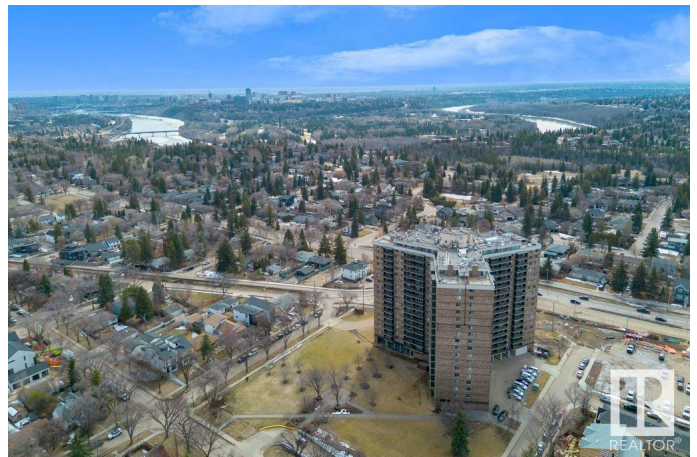
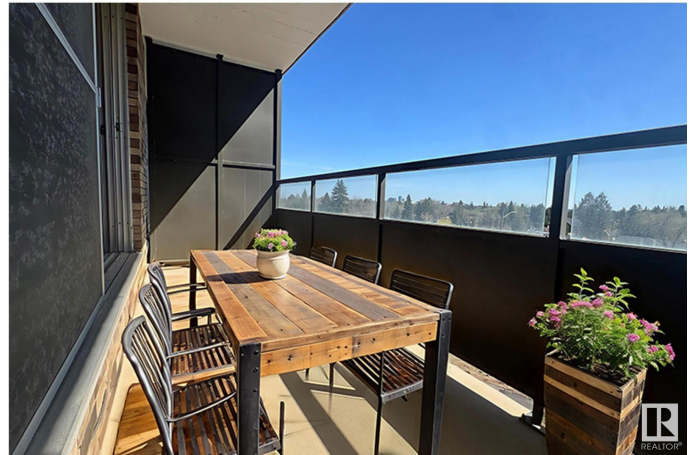
Endless perks, CONCRETE CONSTRUCTION, immediate possession! - Whether you're a first-time buyer, investor, or simply ready to downsize, this 856 Sq Ft 2-bedroom condo in Glenora offers an unbeatable lifestyle with top-tier amenities at your fingertips and ALL UTILITIES INCLUDED! Stepping into this 5th-floor gem you'll be greeted by a bright, sun-filled space brimming with character. The generous living and dining area connects effortlessly to a spacious SOUTH FACING balcony with beautiful CITY VIEWS. Functional galley kitchen, has NEW COUNTER TOPS & sleek white backsplash, offering tons of storage. The spacious primary bedroom has ample closet space, and the versatile second bedroom is perfect for a home office! In-suite storage, on site management office for security, PLUS a fully equipped exercise room, indoor pool, sauna, & games room. Easy access to public transit, & conveniently located near Edmonton's stunning River Valley, the High Street shops & W.E.M! Located directly on future Valley Line West!

Built in 1969

## **Essential Information**

MLS® # E4440508

Price \$129,900



Bedrooms	2
Bathrooms	1.00
Full Baths	1
Square Footage	856
Acres	0.00
Year Built	1969
Type	Condo / Townhouse
Sub-Type	Apartment High Rise
Style	Single Level Apartment
Status	Active

### Community Information

Address	511 13910 Stony Plain Road
Area	Edmonton
Subdivision	Glenora
City	Edmonton
County	ALBERTA
Province	AB
Postal Code	T5N 3R2

### Amenities

Amenities	Pool-Indoor, Recreation Room/Centre, Sauna; Swirlpool; Steam, Security Door, Social Rooms, Storage-In-Suite
Parking	See Remarks
Has Pool	Yes

### Interior

Appliances	Dishwasher-Built-In, Oven-Microwave, Refrigerator, Stove-Electric, Window Coverings
Heating	Baseboard, Water
# of Stories	18
Stories	1
Has Basement	Yes
Basement	None, No Basement

### Exterior

Exterior	Concrete, Brick
Exterior Features	Playground Nearby, Public Transportation, Schools, Shopping Nearby, See Remarks

Roof	Tar & Gravel
Construction	Concrete, Brick
Foundation	Concrete Perimeter

**Additional Information**

Date Listed	June 5th, 2025
Days on Market	12
Zoning	Zone 11
Condo Fee	\$791

DATA IS DEEMED RELIABLE BUT IS NOT GUARANTEED ACCURATE BY THE REALTORS® ASSOCIATION OF EDMONTON. COPYRIGHT 2025 BY THE REALTORS® ASSOCIATION OF EDMONTON. ALL RIGHTS RESERVED.Trademarks are owned or controlled by the Canadian Real Estate Association (CREA) and identify real estate professionals who are members of CREA (REALTOR®, REALTORS®) and/or the quality of services they provide (MLS®, Multiple Listing Service®)

Listing information last updated on June 17th, 2025 at 4:17am MDT