

# **\$299,000 - 102 37 Sir Winston Churchill Avenue, St. Albert**

MLS® #E4440040

**\$299,000**

2 Bedroom, 2.00 Bathroom, 1,080 sqft

Condo / Townhouse on 0.00 Acres

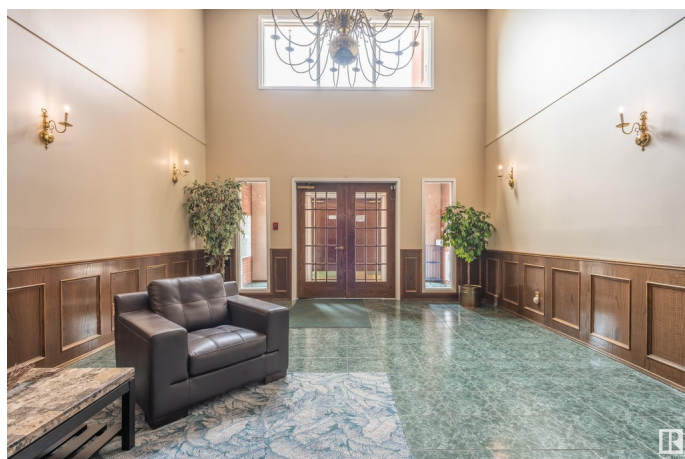
Downtown (St. Albert), St. Albert, AB

Are you thinking of downsizing? The Churchill House condos are a perfect place for you! This main floor condo has an extra sized west facing patio to enjoy the your flowers, summer sun and beautiful sunsets. Inside you have a 2 bedroom , 2 bath home with 1075 sqft of living space. The primary bedroom has a walk through closet to the 3 pcs ensuite with large shower. You have access to your patio from your bedroom as well. The 2nd bedroom has a murphy bed that has plenty of storage capacity. Your bright and sunny kitchen that is open to the living room also has a corner gas fireplace plus it over looks your patio. The complex has many amenities to use. There is a guest suite for you out of town guest, a games/lounge room on the 2nd floor plus a secure bike room in the parkade. Come live the condo lifestyle!

Built in 1993

## **Essential Information**

MLS® #	E4440040
Price	\$299,000
Bedrooms	2
Bathrooms	2.00
Full Baths	2



Square Footage	1,080
Acres	0.00
Year Built	1993
Type	Condo / Townhouse
Sub-Type	Lowrise Apartment
Style	Single Level Apartment
Status	Active

### Community Information

Address	102 37 Sir Winston Churchill Avenue
Area	St. Albert
Subdivision	Downtown (St. Albert)
City	St. Albert
County	ALBERTA
Province	AB
Postal Code	T8N 0G3

### Amenities

Amenities	Guest Suite, Parking-Visitor, Party Room, Security Door, Storage Cage
Parking Spaces	1
Parking	Underground

### Interior

Interior Features	ensuite bathroom
Appliances	Dishwasher-Built-In, Dryer, Freezer, Refrigerator, Stove-Electric, Washer, Window Coverings
Heating	Hot Water, In Floor Heat System, Natural Gas
Fireplace	Yes
Fireplaces	Corner
# of Stories	4
Stories	1
Has Basement	Yes
Basement	None, No Basement

### Exterior

Exterior	Wood, Brick
Exterior Features	Public Transportation, Shopping Nearby
Roof	Asphalt Shingles
Construction	Wood, Brick

Foundation                      Concrete Perimeter

**Additional Information**

Date Listed                      June 2nd, 2025  
Days on Market                42  
Zoning                              Zone 24  
Condo Fee                        \$662

DATA IS DEEMED RELIABLE BUT IS NOT GUARANTEED ACCURATE BY THE REALTORS® ASSOCIATION OF EDMONTON. COPYRIGHT 2025 BY THE REALTORS® ASSOCIATION OF EDMONTON. ALL RIGHTS RESERVED.Trademarks are owned or controlled by the Canadian Real Estate Association (CREA) and identify real estate professionals who are members of CREA (REALTOR®, REALTORS®) and/or the quality of services they provide (MLS®, Multiple Listing Service®)  
Listing information last updated on July 14th, 2025 at 2:47pm MDT