

## \$495,000 - 2341 Casey Crescent, Edmonton

MLS® #E4439911

**\$495,000**

4 Bedroom, 3.50 Bathroom, 1,492 sqft

Single Family on 0.00 Acres

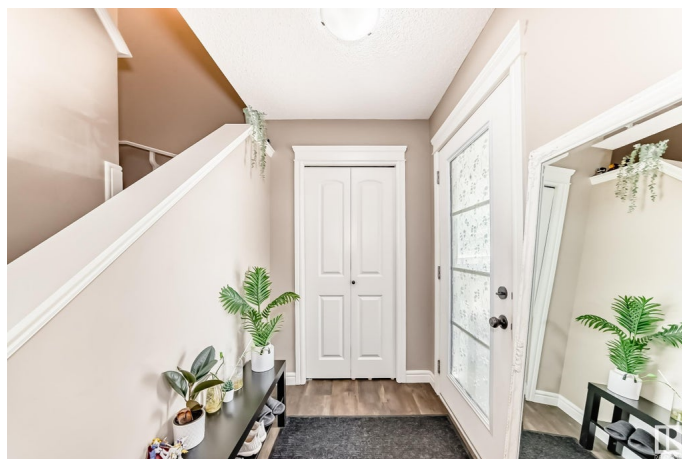
Cavanagh, Edmonton, AB

Welcome to this spacious over 2,000 sqft home in the sought-after Cavaghna neighborhood, complete with a fully developed basement. Enjoy the charm of a large south-facing front porch. The main floor features a bright living room, elegant dining area, and a modern kitchen with granite countertops. A generous laundry room with built-in shelving adds convenience and function. Upstairs, the expansive primary bedroom includes a 4-piece ensuite and walk-in closet. Two additional bedrooms, each with walk-in closets, offer ample space and comfort. The fully finished basement includes a bedroom, full bathroom, and a large recreation roomâ€”perfect for relaxation or entertaining. Currently, the basement is used as a home-based business, providing great versatility. A perfect home for growing families or those seeking flexible living space in a vibrant, family-friendly community.

Built in 2016

### Essential Information

MLS® #	E4439911
Price	\$495,000
Bedrooms	4
Bathrooms	3.50
Full Baths	3





Half Baths	1
Square Footage	1,492
Acres	0.00
Year Built	2016
Type	Single Family
Sub-Type	Detached Single Family
Style	2 Storey
Status	Active

### Community Information

Address	2341 Casey Crescent
Area	Edmonton
Subdivision	Cavanagh
City	Edmonton
County	ALBERTA
Province	AB
Postal Code	T6W 3M9

### Amenities

Amenities	On Street Parking, Closet Organizers, Deck, Detectors Smoke, Front Porch, Hot Water Natural Gas, No Smoking Home
Parking Spaces	2
Parking	Double Garage Detached

### Interior

Interior Features	ensuite bathroom
Appliances	Dishwasher-Built-In, Dryer, Garage Control, Garage Opener, Hood Fan, Refrigerator, Stove-Electric, Washer, Window Coverings
Heating	Forced Air-1, Natural Gas
Stories	3
Has Basement	Yes
Basement	Full, Finished

### Exterior

Exterior	Wood, Stone, Vinyl
Exterior Features	Back Lane, Fenced, Landscaped, Playground Nearby, Public Transportation, Shopping Nearby
Roof	Asphalt Shingles
Construction	Wood, Stone, Vinyl



Foundation                      Concrete Perimeter

**Additional Information**

Date Listed                      June 2nd, 2025

Days on Market                15

Zoning                            Zone 55

DATA IS DEEMED RELIABLE BUT IS NOT GUARANTEED ACCURATE BY THE REALTORS® ASSOCIATION OF EDMONTON. COPYRIGHT 2025 BY THE REALTORS® ASSOCIATION OF EDMONTON. ALL RIGHTS RESERVED.Trademarks are owned or controlled by the Canadian Real Estate Association (CREA) and identify real estate professionals who are members of CREA (REALTOR®, REALTORS®) and/or the quality of services they provide (MLS®, Multiple Listing Service®)

Listing information last updated on June 16th, 2025 at 11:02pm MDT