

\$344,900 - 1405 10238 103 Street, Edmonton

MLS® #E4439321

\$344,900

2 Bedroom, 2.00 Bathroom, 763 sqft

Condo / Townhouse on 0.00 Acres

Downtown (Edmonton), Edmonton, AB

UNQUESTIONABLE ULTIMA!Â This CORNER UNIT has an OPEN FLOOR PLAN & 9' CEILINGS.Â Spacious 2 Bdrm, 2 Bath property features expansive NORTH & WEST SKYLINE VIEWS.Â Floor to ceiling windows make for a bright & sunny home all year round!Â The Kitchen includes high-end brand STAINLESS STEEL APPLIANCES, GLASS BACKSPLASH & GRANITE COUNTERTOPS. Each Bath has matching cabinetry w/ granite countertops & tile flooring.Â Enjoy the outdoors & the downtown landscape from your WRAP-AROUND BALCONY with GAS BBQ HOOK UP.Â Complete w/ UNDERGROUND, HEATED PARKING,Â IN-SUITE LAUNDRY & AIR CONDITIONING.Â Luxury private residence tower w/ CONCIERGE, Fitness Room, Lounge area, Hot Tub & Roof Top Deck.Â Walkable!Â Neighborhood provides access to every convenience: LRT, University, Restaurants, Groceries, Farmer's Market, Office Towers, Ice District, Shopping, River Valley. PET FRIENDLY BUILDING!

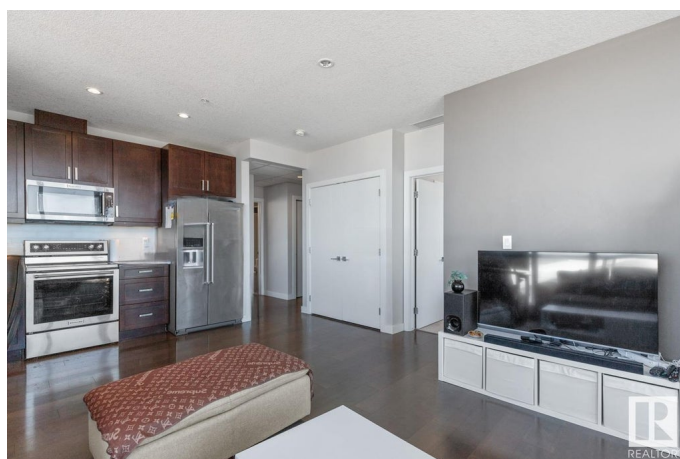
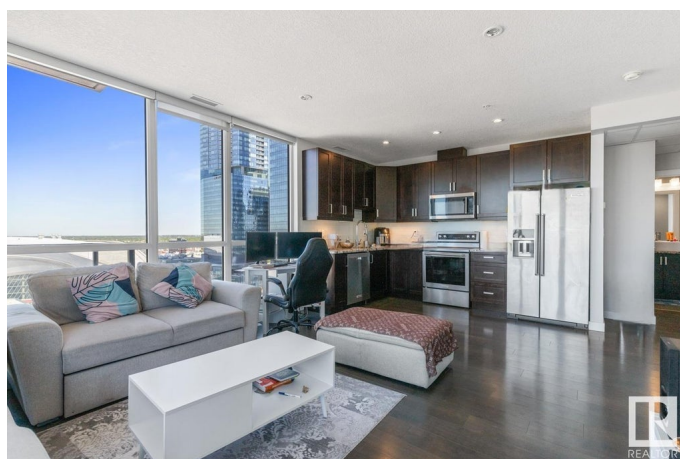
Built in 2016

Essential Information

MLS® # E4439321

Price \$344,900

Bedrooms 2



Bathrooms	2.00
Full Baths	2
Square Footage	763
Acres	0.00
Year Built	2016
Type	Condo / Townhouse
Sub-Type	Apartment High Rise
Style	Single Level Apartment
Status	Active

Community Information

Address	1405 10238 103 Street
Area	Edmonton
Subdivision	Downtown (Edmonton)
City	Edmonton
County	ALBERTA
Province	AB
Postal Code	T5J 0G6

Amenities

Amenities	Air Conditioner, Ceiling 9 ft., Deck, Exercise Room, Hot Tub, Party Room, Recreation Room/Centre, Secured Parking, Social Rooms, Concierge Service, Natural Gas BBQ Hookup, Rooftop Deck/Patio
Parking Spaces	1
Parking	Underground

Interior

Interior Features	ensuite bathroom
Appliances	Dishwasher-Built-In, Dryer, Microwave Hood Fan, Refrigerator, Stove-Electric, Washer
Heating	Forced Air-1, Natural Gas
# of Stories	31
Stories	1
Has Basement	Yes
Basement	None, No Basement

Exterior

Exterior	Concrete, Brick, Metal
Exterior Features	Golf Nearby, Public Transportation, Shopping Nearby, View City, View

	Downtown
Roof	Flat
Construction	Concrete, Brick, Metal
Foundation	Concrete Perimeter

School Information

Elementary	Garneau/St Catherine
Middle	Allendale/St Catherine
High	Victoria/St Joseph

Additional Information

Date Listed	May 29th, 2025
Days on Market	19
Zoning	Zone 12
Condo Fee	\$537

DATA IS DEEMED RELIABLE BUT IS NOT GUARANTEED ACCURATE BY THE REALTORS® ASSOCIATION OF EDMONTON. COPYRIGHT 2025 BY THE REALTORS® ASSOCIATION OF EDMONTON. ALL RIGHTS RESERVED. Trademarks are owned or controlled by the Canadian Real Estate Association (CREA) and identify real estate professionals who are members of CREA (REALTOR®, REALTORS®) and/or the quality of services they provide (MLS®, Multiple Listing Service®)

Listing information last updated on June 17th, 2025 at 4:17am MDT