

**\$399,000 - N/A, Edmonton**

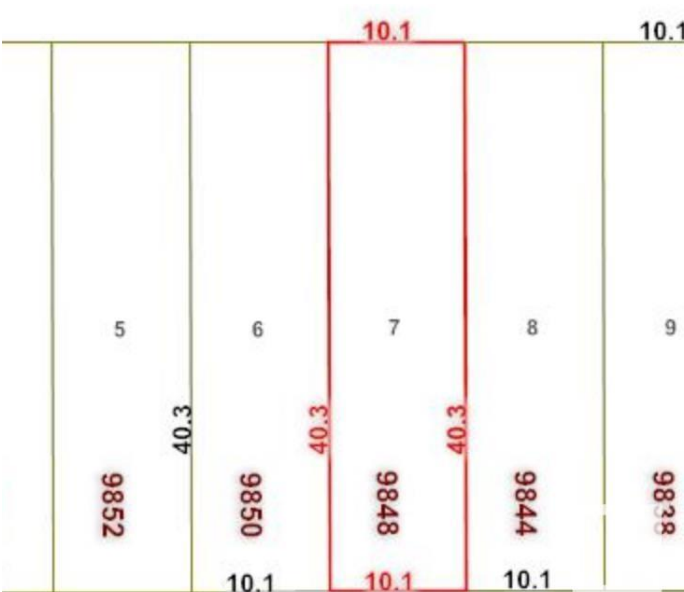
MLS® #E4437109

**\$399,000**

0 Bedroom, 1.00 Bathroom,  
Single Family on 0.00 Acres

Ritchie, Edmonton, AB

This fantastic approx. 4362 sq.ft. lot in the highly desirable mature neighbourhood of Ritchie could be yours! It is located on a tree-lined street and near Ritchie Park and the Community League. The neighbourhood features great dining, shopping, and entertainment venues; quick access to the Millcreek Ravine; easy public transit; close to downtown and the University, and so much more. The property is being sold for land value, as is where is upon possession. Build your dream home or a multi-unit structure.



**Essential Information**

MLS® #	E4437109
Price	\$399,000
Bathrooms	1.00
Full Baths	1
Acres	0.00
Type	Single Family
Sub-Type	Vacant Lot/Land
Style	Bungalow
Status	Active

**Community Information**

Address	N/A
Area	Edmonton
Subdivision	Ritchie

City	Edmonton
County	ALBERTA
Province	AB
Postal Code	T6E 1M4

### **Amenities**

Parking	Single Garage Detached
---------	------------------------

### **Interior**

Heating	Natural Gas
---------	-------------

### **Exterior**

Exterior Features	Back Lane, Playground Nearby, Public Transportation, Schools, Shopping Nearby
-------------------	---

### **Additional Information**

Date Listed	May 17th, 2025
-------------	----------------

Zoning	Zone 17
--------	---------

DATA IS DEEMED RELIABLE BUT IS NOT GUARANTEED ACCURATE BY THE REALTORS® ASSOCIATION OF EDMONTON. COPYRIGHT 2025 BY THE REALTORS® ASSOCIATION OF EDMONTON. ALL RIGHTS RESERVED. Trademarks are owned or controlled by the Canadian Real Estate Association (CREA) and identify real estate professionals who are members of CREA (REALTOR®, REALTORS®) and/or the quality of services they provide (MLS®, Multiple Listing Service®)

Listing information last updated on May 17th, 2025 at 8:32am MDT