

\$325,000 - 82 3380 28a Avenue, Edmonton

MLS® #E4435672

\$325,000

3 Bedroom, 2.50 Bathroom, 1,334 sqft
Condo / Townhouse on 0.00 Acres

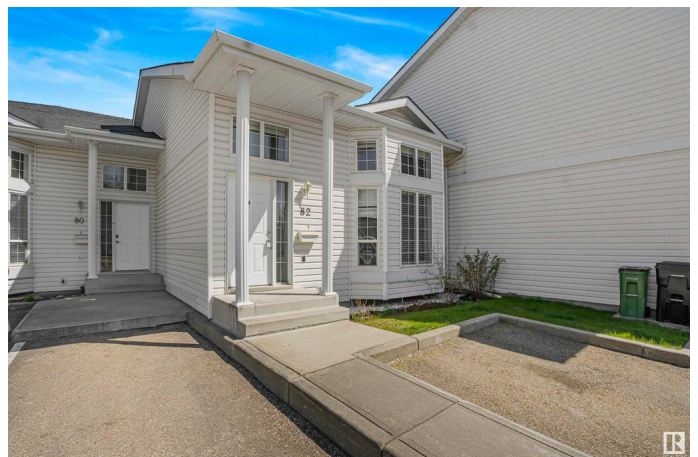
Silver Berry, Edmonton, AB

Welcome Home! Perfect opportunity for first-time home buyers and investors! This well kept 2 + 1 bed 2.5 bath townhouse in family friendly Silverberry neighbourhood offers a spacious 2-storey layout. The main floor features a grand living room with vaulted ceilings and large windows, a dining room perfect for a large table. The sunny kitchen has white cabinets, ample cupboards, and a breakfast nook leading to a private patio/deck. A welcoming entryway and a 2-piece bathroom complete this level. Upstairs, the primary bedroom boasts a walk-through closet to a 4-piece bath, while the second bedroom also has a walk-in closet. The finished basement is complete with living room, 3rd bedroom, 3 pc bath, laundry and ample storage. Enjoy 2 energized parking stalls right in front of the home. Prime location close to major amenities, public transportation, schools, Whitemud drive, and more.

Built in 2003

Essential Information

MLS® #	E4435672
Price	\$325,000
Bedrooms	3
Bathrooms	2.50
Full Baths	2



Half Baths	1
Square Footage	1,334
Acres	0.00
Year Built	2003
Type	Condo / Townhouse
Sub-Type	Townhouse
Style	2 Storey
Status	Active

Community Information

Address	82 3380 28a Avenue
Area	Edmonton
Subdivision	Silver Berry
City	Edmonton
County	ALBERTA
Province	AB
Postal Code	T6T 1V4

Amenities

Amenities	Deck, Parking-Visitor
Parking	2 Outdoor Stalls

Interior

Interior Features	ensuite bathroom
Appliances	Dishwasher-Built-In, Dryer, Refrigerator, Stove-Electric, Vacuum System Attachments, Washer, Window Coverings
Heating	Forced Air-1, Natural Gas
Stories	3
Has Basement	Yes
Basement	Full, Finished

Exterior

Exterior	Wood, Vinyl
Exterior Features	Landscaped, Public Transportation, Schools, Shopping Nearby
Roof	Asphalt Shingles
Construction	Wood, Vinyl
Foundation	Concrete Perimeter

Additional Information

Date Listed	May 9th, 2025
Days on Market	38
Zoning	Zone 30
Condo Fee	\$308

DATA IS DEEMED RELIABLE BUT IS NOT GUARANTEED ACCURATE BY THE REALTORS® ASSOCIATION OF EDMONTON. COPYRIGHT 2025 BY THE REALTORS® ASSOCIATION OF EDMONTON. ALL RIGHTS RESERVED. Trademarks are owned or controlled by the Canadian Real Estate Association (CREA) and identify real estate professionals who are members of CREA (REALTOR®, REALTORS®) and/or the quality of services they provide (MLS®, Multiple Listing Service®)

Listing information last updated on June 16th, 2025 at 6:02pm MDT