

\$209,000 - 401 245 Edwards Drive, Edmonton

MLS® #E4433195

\$209,000

2 Bedroom, 2.00 Bathroom, 812 sqft

Condo / Townhouse on 0.00 Acres

Ellerslie, Edmonton, AB

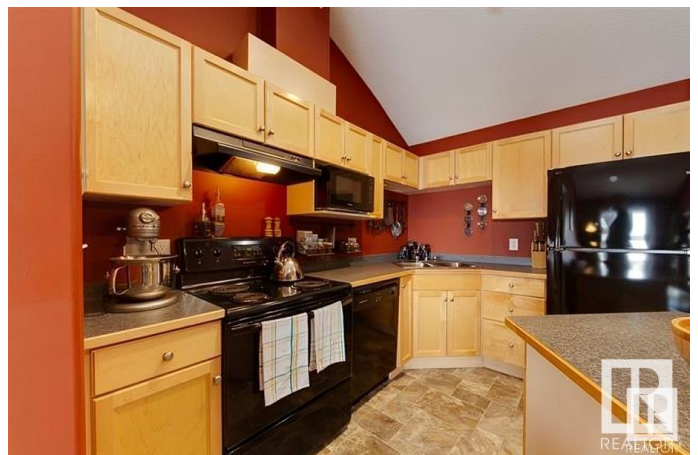
Top-floor living at its best! This bright and spacious condo features soaring vaulted ceilings across the open-concept living, dining, and kitchen areas, creating an airy and welcoming space. Enjoy durable plank flooring throughout the main living areas and bedroom, with easy-care linoleum in the kitchen and baths. The well-appointed kitchen offers generous counter space, an island with seating. The living room opens to a west-facing balcony through sliding glass doors—perfect for enjoying sunsets. The large primary bedroom features a walk-through closet and private 3-piece ensuite, while the second bedroom is ideal for guests, a roommate, or a home office. Additional highlights include in-suite laundry and a parking stall. Residents enjoy access to an exercise room and ample visitor parking. Located next to a man-made lake with walking and bike paths, close to parks, playgrounds, schools, shopping, public transportation, and offers quick access to Anthony Henday, South Edmonton Common, & the airport!

Built in 2004

Essential Information

MLS® # E4433195

Price \$209,000



Bedrooms	2
Bathrooms	2.00
Full Baths	2
Square Footage	812
Acres	0.00
Year Built	2004
Type	Condo / Townhouse
Sub-Type	Lowrise Apartment
Style	Single Level Apartment
Status	Active

Community Information

Address	401 245 Edwards Drive
Area	Edmonton
Subdivision	Ellerslie
City	Edmonton
County	ALBERTA
Province	AB
Postal Code	T6X 1J9

Amenities

Amenities	Exercise Room, No Animal Home, No Smoking Home, Parking-Plug-Ins, Vaulted Ceiling, Vinyl Windows
Parking	Stall

Interior

Interior Features	ensuite bathroom
Appliances	Dishwasher-Built-In, Dryer, Garburator, Hood Fan, Oven-Microwave, Refrigerator, Stove-Electric, Washer
Heating	Baseboard, Natural Gas
# of Stories	4
Stories	1
Has Basement	Yes
Basement	None, No Basement

Exterior

Exterior	Wood, Vinyl
Exterior Features	Park/Reserve, Playground Nearby, Public Transportation, Schools, Shopping Nearby

Roof	Asphalt Shingles
Construction	Wood, Vinyl
Foundation	Concrete Perimeter

Additional Information

Date Listed	April 28th, 2025
Days on Market	50
Zoning	Zone 53
Condo Fee	\$381

DATA IS DEEMED RELIABLE BUT IS NOT GUARANTEED ACCURATE BY THE REALTORS® ASSOCIATION OF EDMONTON. COPYRIGHT 2025 BY THE REALTORS® ASSOCIATION OF EDMONTON. ALL RIGHTS RESERVED.Trademarks are owned or controlled by the Canadian Real Estate Association (CREA) and identify real estate professionals who are members of CREA (REALTOR®, REALTORS®) and/or the quality of services they provide (MLS®, Multiple Listing Service®)

Listing information last updated on June 16th, 2025 at 11:02pm MDT