

\$524,900 - 4709 Hawthorn Lane, Edmonton

MLS® #E4431519

\$524,900

3 Bedroom, 2.50 Bathroom, 1,795 sqft

Single Family on 0.00 Acres

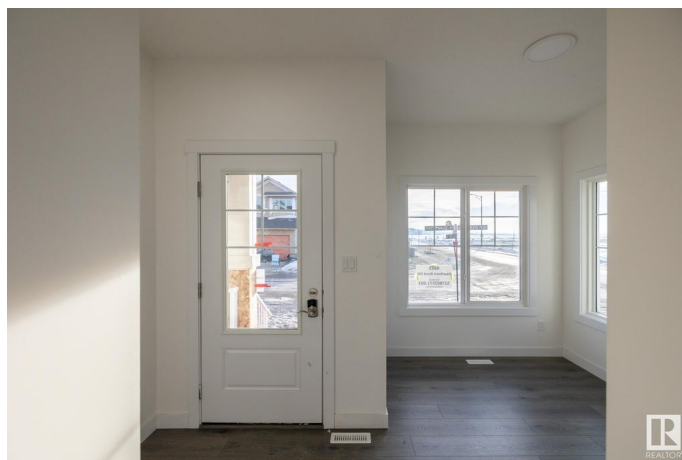
The Orchards At Ellerslie, Edmonton, AB

Located in South Ellerslie, natural beauty surrounds Orchards. You and your family can embrace the beautiful green spaces with lots of room to play, relax, and explore the outdoors. The Willow-Z from Akash Homes welcomes you with a spacious foyer leading into an open-concept main floor. This well-designed space features 9' ceilings and a den on the main floor, laminate flooring, and a chef's kitchen with quartz counters, a closet pantry, and soft-close cabinets. Conveniently access the attached garage directly from the main floor. Upstairs, unwind in the primary suite designed for two, along with two more bedrooms, a bonus room, and second-floor laundry for added ease. SEPARATE ENTRANCE included. ****PLEASE NOTE**** PICTURES ARE OF SIMILAR HOME; ACTUAL HOME, PLANS, FIXTURES, AND FINISHES MAY VARY AND ARE SUBJECT TO AVAILABILITY/CHANGES WITHOUT NOTICE. HOME IS NOW COMPLETE!

Built in 2025

Essential Information

MLS® #	E4431519
Price	\$524,900
Bedrooms	3
Bathrooms	2.50



Full Baths	2
Half Baths	1
Square Footage	1,795
Acres	0.00
Year Built	2025
Type	Single Family
Sub-Type	Detached Single Family
Style	2 Storey
Status	Active

Community Information

Address	4709 Hawthorn Lane
Area	Edmonton
Subdivision	The Orchards At Ellerslie
City	Edmonton
County	ALBERTA
Province	AB
Postal Code	T6X 3C5

Amenities

Amenities	Deck
Parking	Double Garage Attached

Interior

Interior Features	ensuite bathroom
Appliances	See Remarks
Heating	Forced Air-1, Natural Gas
Fireplace	Yes
Fireplaces	Glass Door
Stories	2
Has Basement	Yes
Basement	Full, Unfinished

Exterior

Exterior	Wood, Vinyl
Exterior Features	Not Fenced, Not Landscaped
Roof	Asphalt Shingles
Construction	Wood, Vinyl
Foundation	Concrete Perimeter

Additional Information

Date Listed	April 17th, 2025
Days on Market	107
Zoning	Zone 53
HOA Fees	400
HOA Fees Freq.	Annually

DATA IS DEEMED RELIABLE BUT IS NOT GUARANTEED ACCURATE BY THE REALTORS® ASSOCIATION OF EDMONTON. COPYRIGHT 2025 BY THE REALTORS® ASSOCIATION OF EDMONTON. ALL RIGHTS RESERVED.Trademarks are owned or controlled by the Canadian Real Estate Association (CREA) and identify real estate professionals who are members of CREA (REALTOR®, REALTORS®) and/or the quality of services they provide (MLS®, Multiple Listing Service®)

Listing information last updated on August 2nd, 2025 at 1:47pm MDT