

\$729,900 - 34 Edinburgh Court, St. Albert

MLS® #E4431518

\$729,900

4 Bedroom, 3.50 Bathroom, 2,421 sqft

Single Family on 0.00 Acres

Erin Ridge North, St. Albert, AB

Absolutely impeccable! This fully developed 2-storey home offers over 2,420 sq ft plus a finished basementâ€”perfect for family living. With 3 + 1 bedrooms, 4 baths, a spacious bonus room, dinette, mudroom, and a double attached garage, every detail is pristine. From the striking curb appeal and lush landscaping to the modern, neutral palette, itâ€™s clear this home is something special. Wide plank engineered hardwood floors pair beautifully with crisp white cabinetry, quartz counters, subway tile backsplash, and stainless steel appliancesâ€”all enhanced by designer lighting. The chef-inspired kitchen boasts a large island and sunlit dinette with HUGE windows overlooking the private deck and backyard. The upper-level bonus room and basement rec room offer space for everyone. The DREAM primary suite features a large walk-in closet and a luxurious 5-pce Ensuite with dual sinks, soaker tub, and walk-in shower. A true 10+ home you donâ€™t want to miss!

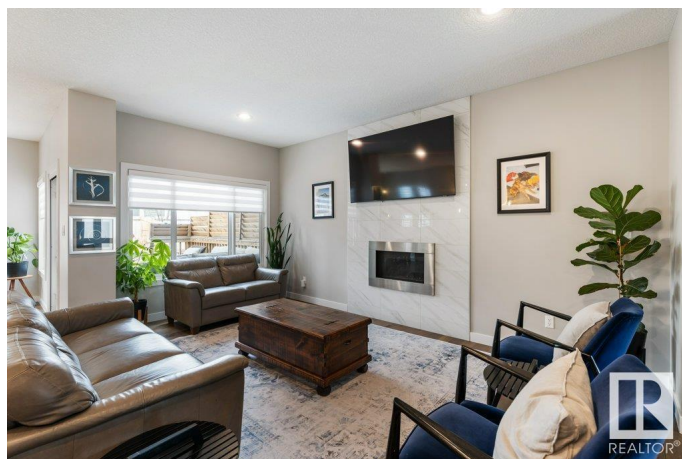
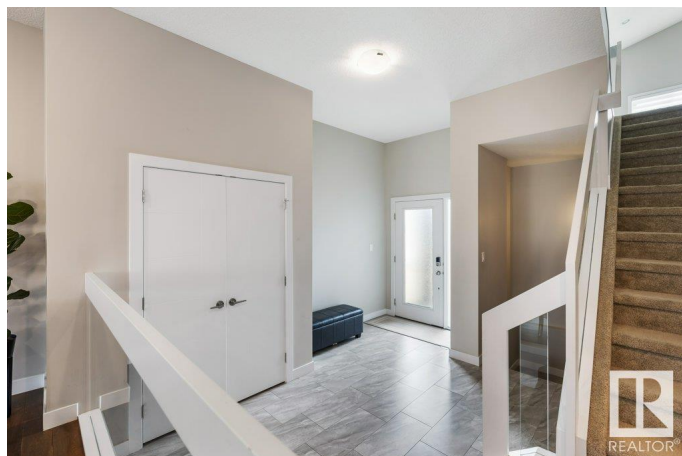
Built in 2016

Essential Information

MLS® # E4431518

Price \$729,900

Bedrooms 4



Bathrooms	3.50
Full Baths	3
Half Baths	1
Square Footage	2,421
Acres	0.00
Year Built	2016
Type	Single Family
Sub-Type	Detached Single Family
Style	2 Storey
Status	Active

Community Information

Address	34 Edinburgh Court
Area	St. Albert
Subdivision	Erin Ridge North
City	St. Albert
County	ALBERTA
Province	AB
Postal Code	T8N 6M8

Amenities

Amenities	Deck
Parking	Double Garage Attached

Interior

Interior Features	ensuite bathroom
Appliances	Dishwasher-Built-In, Dryer, Garage Control, Garage Opener, Hood Fan, Oven-Microwave, Refrigerator, Stove-Electric, Washer, Window Coverings, See Remarks
Heating	Forced Air-1, Natural Gas
Stories	3
Has Basement	Yes
Basement	Full, Finished

Exterior

Exterior	Wood, Stone, Vinyl
Exterior Features	Fenced, Landscaped, Public Transportation, Schools, Shopping Nearby, See Remarks
Roof	Asphalt Shingles

Construction	Wood, Stone, Vinyl
Foundation	Concrete Perimeter

Additional Information

Date Listed	April 17th, 2025
Days on Market	13
Zoning	Zone 24

DATA IS DEEMED RELIABLE BUT IS NOT GUARANTEED ACCURATE BY THE REALTORS® ASSOCIATION OF EDMONTON. COPYRIGHT 2025 BY THE REALTORS® ASSOCIATION OF EDMONTON. ALL RIGHTS RESERVED.Trademarks are owned or controlled by the Canadian Real Estate Association (CREA) and identify real estate professionals who are members of CREA (REALTOR®, REALTORS®) and/or the quality of services they provide (MLS®, Multiple Listing Service®)

Listing information last updated on April 30th, 2025 at 7:02pm MDT