

\$495,000 - 479 Rainbow Crescent, Sherwood Park

MLS® #E4430175

\$495,000

8 Bedroom, 3.00 Bathroom, 1,270 sqft

Single Family on 0.00 Acres

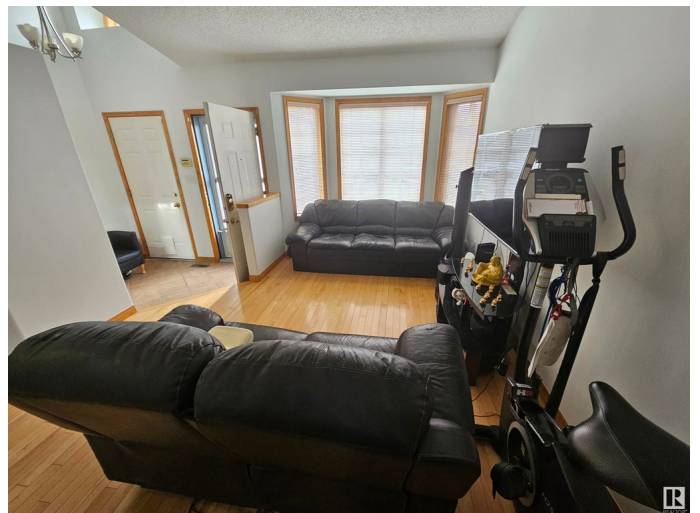
Regency Park (Sherwood Park), Sherwood Park, AB

This 6 bedroom, upgraded 4 level split has over 1900 sf on 3 levels. It features vaulted ceilings, hardwood floors, large eat in kitchen w/pantry, and new shingles in 2023. The home was just freshly painted. The front leads to a spacious living room/dining room. With the east facing kitchen, you can enjoy an early morning coffee watching the sunrise. There's a deck off the rear door, overlooking the nice sized, private back yard. The large master bedroom has a 3 pc ensuite & walk in closet. There are two additional bedrooms on the upper floor & a full 4pc bathroom. The 3rd level is finished with a huge Family Room w/fireplace, 4th bedroom or den/playroom, 3 pc bath & convenient laundry facility. The basement level is also finished adding two more bedrooms and a 4th bathroom with a shower.. With a great location close to schools & playgrounds, this home is perfect for a growing family.

Built in 1995

Essential Information

MLS® #	E4430175
Price	\$495,000
Bedrooms	8
Bathrooms	3.00



Full Baths	3
Square Footage	1,270
Acres	0.00
Year Built	1995
Type	Single Family
Sub-Type	Detached Single Family
Style	4 Level Split
Status	Active

Community Information

Address	479 Rainbow Crescent
Area	Sherwood Park
Subdivision	Regency Park (Sherwood Park)
City	Sherwood Park
County	ALBERTA
Province	AB
Postal Code	T8A 5T6

Amenities

Amenities	Deck, Detectors Smoke, Vaulted Ceiling, Vinyl Windows, Solar Equipment
Parking	Double Garage Attached

Interior

Interior Features	ensuite bathroom
Appliances	Dishwasher-Built-In, Dryer, Freezer, Garage Control, Garage Opener, Hood Fan, Oven-Microwave, Refrigerator, Storage Shed, Stove-Electric, Washer, Window Coverings
Heating	Forced Air-1, Natural Gas
Fireplace	Yes
Fireplaces	Fresh Air
Stories	4
Has Basement	Yes
Basement	Full, Finished

Exterior

Exterior	Wood, Vinyl
Exterior Features	Fenced, Fruit Trees/Shrubs, Landscaped, Playground Nearby, Public Transportation, Schools, Shopping Nearby

Roof	Asphalt Shingles
Construction	Wood, Vinyl
Foundation	Concrete Perimeter

Additional Information

Date Listed	April 8th, 2025
Days on Market	69
Zoning	Zone 25

DATA IS DEEMED RELIABLE BUT IS NOT GUARANTEED ACCURATE BY THE REALTORS® ASSOCIATION OF EDMONTON. COPYRIGHT 2025 BY THE REALTORS® ASSOCIATION OF EDMONTON. ALL RIGHTS RESERVED.Trademarks are owned or controlled by the Canadian Real Estate Association (CREA) and identify real estate professionals who are members of CREA (REALTOR®, REALTORS®) and/or the quality of services they provide (MLS®, Multiple Listing Service®)

Listing information last updated on June 16th, 2025 at 5:02pm MDT