

## \$774,900 - 10205 137 Street, Edmonton

MLS® #E4427594

**\$774,900**

4 Bedroom, 3.00 Bathroom, 2,468 sqft

Single Family on 0.00 Acres

Glenora, Edmonton, AB

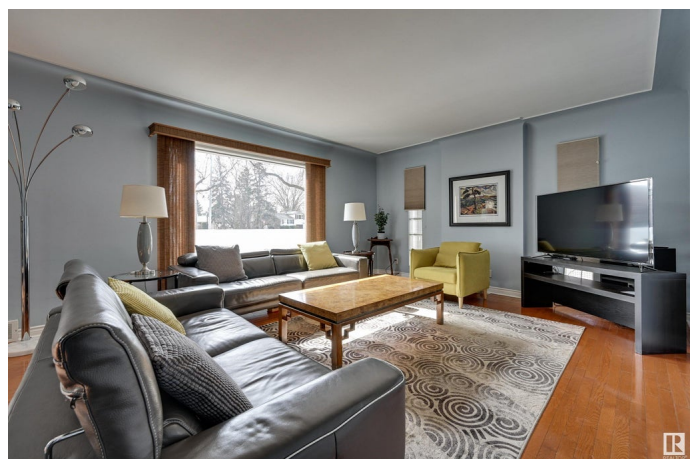
Nestled in the highly sought-after neighborhood of Glenora, this 2-storey home offers a perfect blend of character, comfort, and modern convenience. Featuring triple-pane windows (2010), this naturally lit, year-round bright home provides comfort and tranquility. Step inside to find hardwood floors throughout, a spacious and updated kitchen complete with modern appliances, sleek cabinets, and upgraded countertops—perfect for cooking and entertaining. The home boasts generous bedrooms with large, sunny windows, offering a warm and inviting atmosphere. Enjoy the outdoors with a very private, large upper deck, ideal for morning coffee or evening relaxation. Fully fenced yard is a gardener's dream, featuring mature plantings and plenty of space for outdoor activities. Upgrades include a newer furnace (2019) and a new driveway (2017), ensuring comfort and convenience. The home also features a 3-zoned furnace system. Located just steps from the future LRT, and bike paths make commuting, a breeze.

Built in 1949

### Essential Information

MLS® # E4427594

Price \$774,900



Bedrooms	4
Bathrooms	3.00
Full Baths	2
Half Baths	2
Square Footage	2,468
Acres	0.00
Year Built	1949
Type	Single Family
Sub-Type	Detached Single Family
Style	2 Storey
Status	Active

### Community Information

Address	10205 137 Street
Area	Edmonton
Subdivision	Glenora
City	Edmonton
County	ALBERTA
Province	AB
Postal Code	T5N 2G8

### Amenities

Amenities	Deck, Hot Tub, No Smoking Home, Rooftop Deck/Patio
Parking	Double Garage Attached

### Interior

Interior Features	ensuite bathroom
Appliances	Dishwasher-Built-In, Dryer, Garage Opener, Stove-Gas, Washer, Wine/Beverage Cooler, Refrigerators-Two
Heating	Forced Air-1, Natural Gas
Stories	3
Has Basement	Yes
Basement	Full, Finished

### Exterior

Exterior	Wood, Vinyl
Exterior Features	Back Lane, Fenced, Flat Site, Fruit Trees/Shrubs, Landscaped, Playground Nearby, Schools, Shopping Nearby
Roof	Asphalt Shingles, EPDM Membrane

Construction	Wood, Vinyl
Foundation	Concrete Perimeter

**Additional Information**

Date Listed	March 26th, 2025
Days on Market	35
Zoning	Zone 11

DATA IS DEEMED RELIABLE BUT IS NOT GUARANTEED ACCURATE BY THE REALTORS® ASSOCIATION OF EDMONTON. COPYRIGHT 2025 BY THE REALTORS® ASSOCIATION OF EDMONTON. ALL RIGHTS RESERVED.Trademarks are owned or controlled by the Canadian Real Estate Association (CREA) and identify real estate professionals who are members of CREA (REALTOR®, REALTORS®) and/or the quality of services they provide (MLS®, Multiple Listing Service®)

Listing information last updated on April 30th, 2025 at 4:17pm MDT